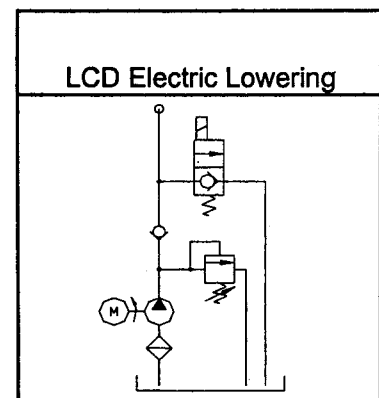
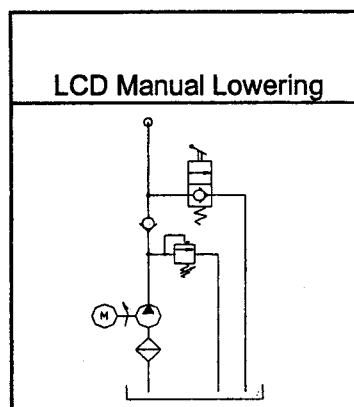
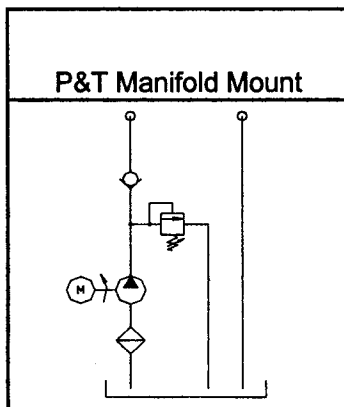
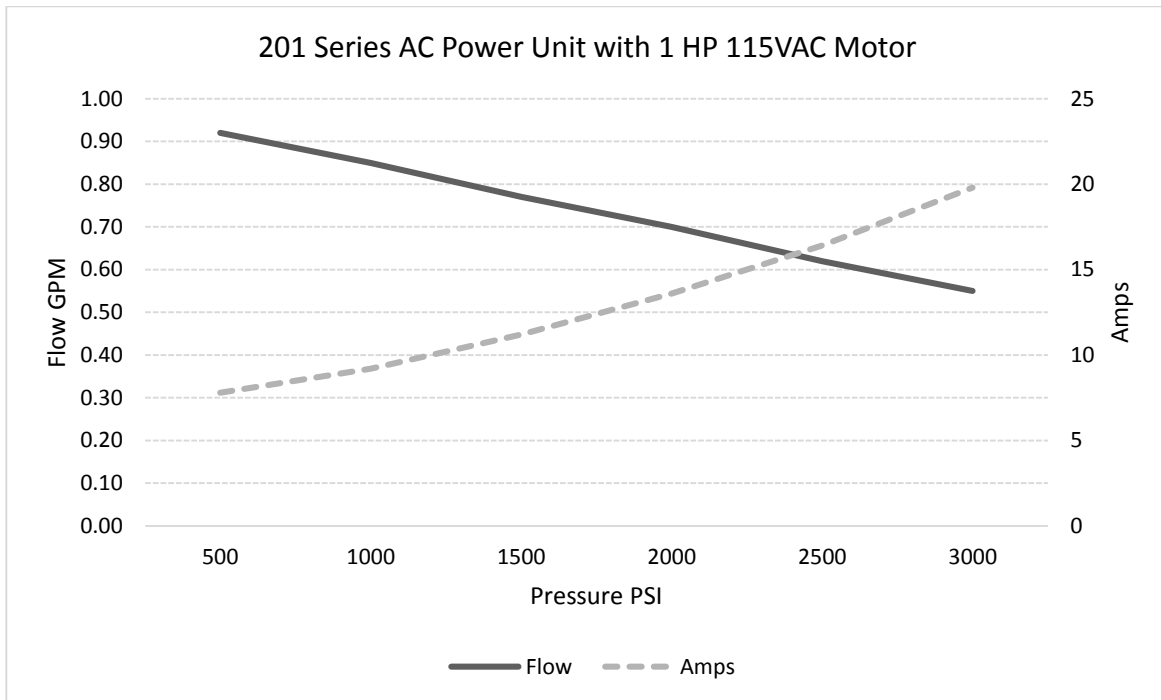




MTE Hydraulics, Inc.
4701 Kishwaukee St.
Rockford, IL 61109
Phone: 815-397-4701
www.mtehydraulics.com

AC HYDRAULIC POWER UNITS SPECS - REVISION 02/21/2016



PLEASE NOTE: - Flow numbers based on IOS 32 @ 90 deg. F (200 SSU), amps at 115 VAC
- Duty cycle of AC motor is rated as intermittent.
- Full flow (working pressure) is calculated at 80% of relief valve pressure
- All numbers are given as nominal values and should be used as reference for sizing a power unit for a specific application.



MTE Hydraulics, Inc.

4701 Kishwaukee St.

Rockford, IL 61109

Phone: 815-397-4701

www.mtehydraulics.com

