



MTE Hydraulics, Inc.
 Rockford, IL 61109
 Tel: 815-397-4701

Website www.mtehydraulics.com

[Main Menu](#)

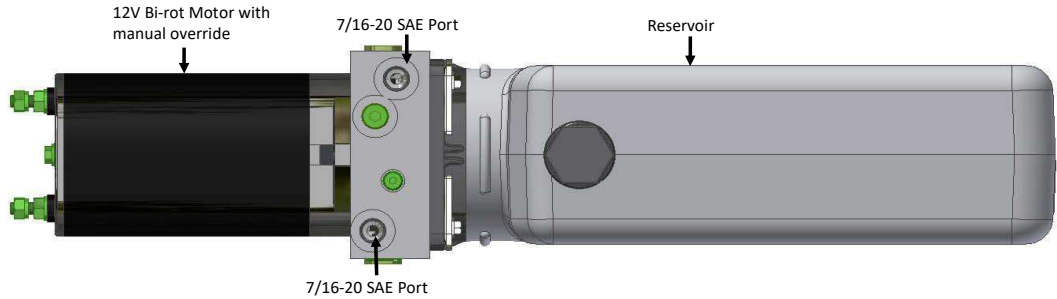
100 Series DC Bi-Rotational Unit

Description

Bi-Rotational Unit
 Internal Check Valves
 (2) Relief Valves
 7/16-20 SAE Ports.
 Horizontal or Vertical Mounting
 PO Check Valves

Available Options

Back Pressure Circuit



Ordering Information

Fixed Displ Pump Size

_____	101-(.019 in ³ /rev)
_____	101-(.018 in ³ rev)
_____	102-(.025 in ³ rev)
_____	103-(.042 in ³ rev)

(Mark Pump Size with X)

Consult factory for additional

Tank Sizes

_____	.42 Quart
_____	.79 Quart
_____	1.2 Quart
_____	1.6 Quart
_____	2 Quart

(Mark Tank Size with X)

Contact factory for other tank sizes available

Tank Orientation

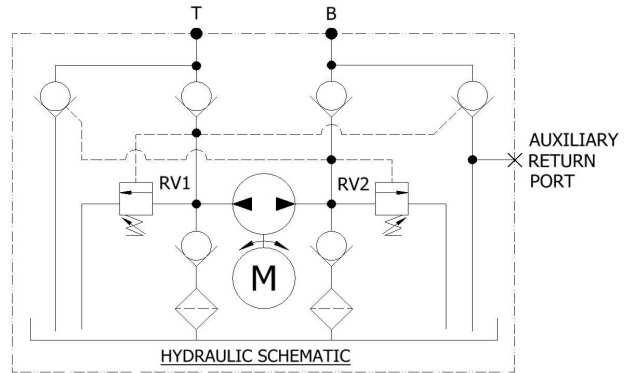
_____	Horizontal
_____	Vertical

(Mark orientation with X)

Tank Style

_____	Plastic
_____	Steel

(Mark Tank Option with X)



Application Information

Are there Drawings/Schematics available _____

Operating Pressure: _____ time on _____ time off _____

RV1 Pressure: _____ time on _____ time off _____

RV2 setting _____

Type of hydraulic fluid: _____ Fluid conditions: _____

Envelope restrictions: _____

Mounting requirements _____

Cylinder information: Stroke _____ Rod _____ Bore _____

No. of units required: _____ Mo. Yr Prototype required

Target Price: _____ Target Customer _____

Additional Information _____

(Coil Type, Fittings, PCFC, Etc.)
