



MTE Hydraulics, Inc.
Rockford, IL 61109
Tel: 815-397-4701

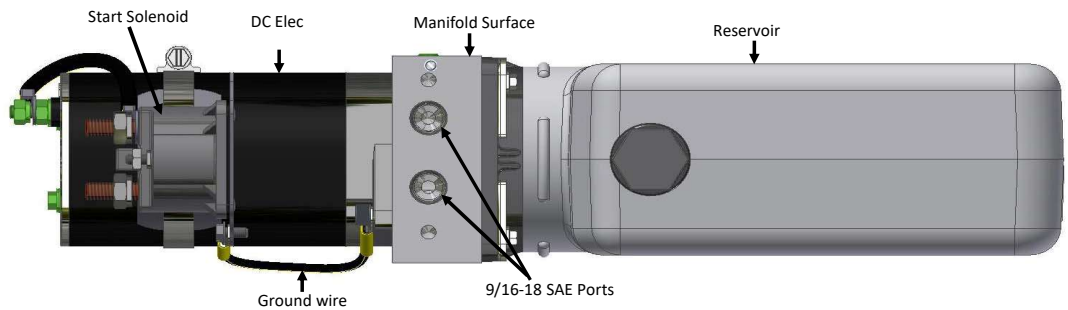
Website www.mtehydraulics.com

[Main Menu](#)

100 Series DC Manifold Mount Unit

Description

Manifold Mount Unit
Internal Check Valve
Relief Valve
9/16-18 SAE Ports.
Horizontal or Vertical Mounting
800kW Motor
Manual Override Option on Motor



Ordering Information

Fixed Displ Pump Size

_____	101-(.019 in ³ /rev)
_____	101-(.018 in ³ rev)
_____	102-(.025 in ³ rev)
_____	103-(.042 in ³ rev)

(Mark Pump Size with X)

Consult factory for additional

Tank Sizes

_____	.42 Quart
_____	.79 Quart
_____	1.2 Quart
_____	1.6 Quart
_____	2 Quart

(Mark Tank Size with X)

Contact factory for other tank sizes available

Tank Style

- _____ Plastic
- _____ Steel

(Mark Tank Option with X)

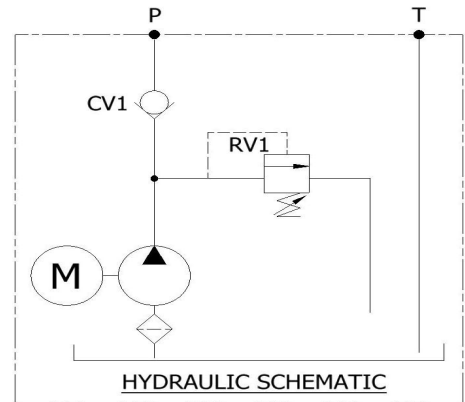
Motor Options

_____	12VDC Motor
_____	24VDC Motor

Tank Orientation

- _____ Horizontal
- _____ Vertical

(Mark orientation)



Application Information

Are there Drawings/Schematics available _____

Operating Pressure: _____ time on _____ time off _____

RV Pressure: _____ time on _____ time off _____

Type of hydraulic fluid: _____ Fluid conditions: _____

Envelope restrictions: _____

Mounting requirements _____

No. of units required: _____ Mo. Yr Prototype required

Target Price: _____ Target Customer _____

Additional Information _____

(Coil Type, Fittings, PCFC, Etc.)
