



MTE Hydraulics, Inc.  
Rockford, IL 61109  
Tel: 815-397-4701

Website [www.mtehydraulics.com](http://www.mtehydraulics.com)

[Main Menu](#)

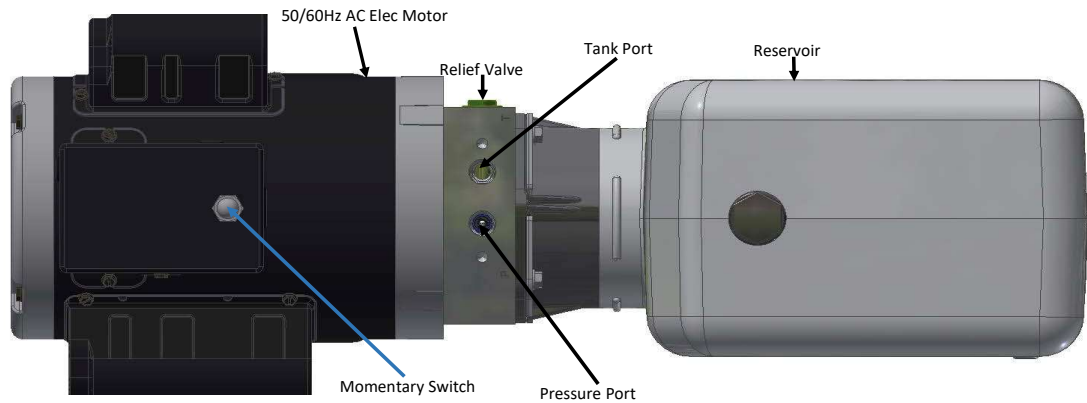
## Manifold Mount AC Unit

### Description

Manifold Mount Unit  
Internal Check Valve  
Relief Valve  
9/16-18 SAE Ports.  
Horizontal or Vertical Mounting  
2HP AC Elec Motor

### Available Options

DO3 Mounting Attachment



### Ordering Information

#### Fixed Displ Pump Size

201-(.067 in <sup>3</sup> /rev)
202-(.110 in <sup>3</sup> rev)
203-(.150 in <sup>3</sup> rev)
204-(.191 in <sup>3</sup> rev)

(Mark Pump Size with X)

Consult factory for additional pumps sizes not shown.

#### Motor Options

1HP, 1PH, 115/208-230V
2HP, 1PH, 208-230V
2HP, 3PH, 208-230V

(Mark Motor Option with X)

#### Tank Orientation

Horizontal
Vertical

(Mark orientation with X)

#### Tank Style

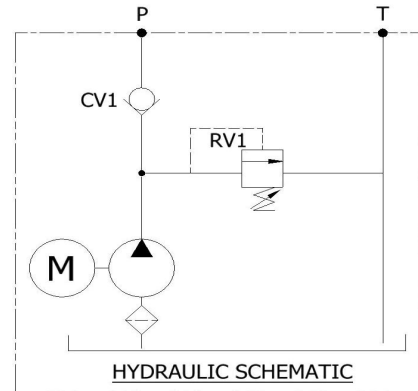
Plastic
Steel

(Mark Tank Option with X)

#### Tank Sizes

1 Gallon
1.25 Gallon
1.5 Gallon
2 Gallon
2.5 Gallon

Contact factory for other tank sizes available



### Application Information

Are there Drawings/Schematics available \_\_\_\_\_

Operating Pressure: \_\_\_\_\_ time on \_\_\_\_\_ time off \_\_\_\_\_

RV Pressure: \_\_\_\_\_ time on \_\_\_\_\_ time off \_\_\_\_\_

Type of hydraulic fluid: \_\_\_\_\_ Fluid conditions: \_\_\_\_\_

Envelope restrictions: \_\_\_\_\_

Mounting requirements \_\_\_\_\_

Cylinder information: Stroke \_\_\_\_\_ Rod \_\_\_\_\_ Bore \_\_\_\_\_

No. of units required: \_\_\_\_\_  Mo.  Yr  Prototype required

Target Price: \_\_\_\_\_ Target Customer \_\_\_\_\_

Additional Information \_\_\_\_\_

(Coil Type, Fittings, PCFC, Etc.)

---



---



---