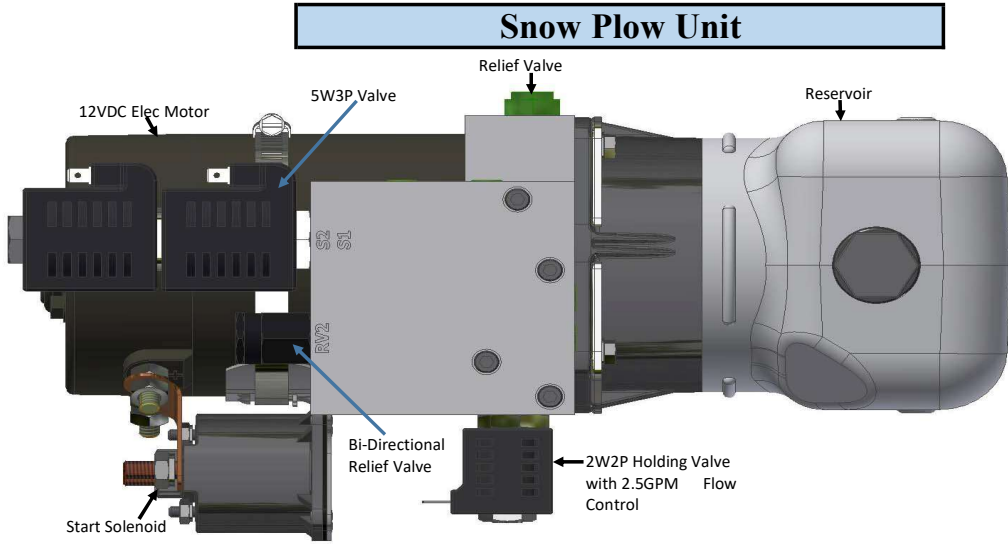




Description

Snow Plow Unit
 Internal Check Valves
 2W2P Normally Closed Valve
 5W3P Directional Valve
 (2) Relief Valve
 (3) 9/16-18 SAE Ports.
 Horizontal or Vertical Mounting
 Flow Control-Optimal Sizes



Ordering Information

Fixed Displ Pump Size

201-(.067 in ³ /rev)
202-(.110 in ³ rev)
203-(.150 in ³ rev)
204-(.191 in ³ rev)

(Mark Pump Size with X)

Consult factory for additional pumps sizes not shown.

Tank Sizes

3 Qt
1 Gallon
1.25 Gallon
1.5 Gallon
2 Gallon

Contact factory for other tank sizes available

Tank Style

- Plastic
- Steel

(Mark Tank Option with X)

Motor Options

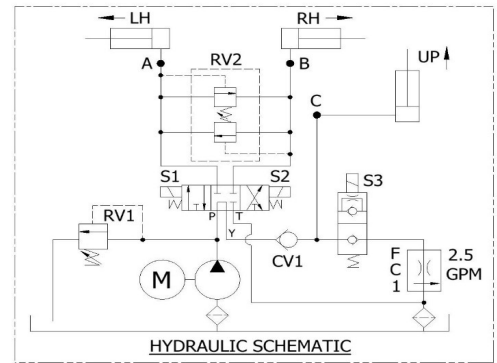
12VDC Std duty Motor
12VDC Heavy duty Motor
24VDC Std duty Motor

(Mark Motor Option with X)

Tank Orientation

- Horizontal
- Vertical

(Mark orientation with X)



Application Information

Are there Drawings/Schematics available _____

Operating Pressure: _____ time on _____ time off _____

RV1 Pressure: _____ time on _____ time off _____

RV2 Setting _____

Type of hydraulic fluid: _____ Fluid conditions: _____

Envelope restrictions: _____

Mounting requirements _____

Cylinder information: Stroke _____ Rod _____ Bore _____

No. of units required: _____ Mo. Yr Prototype required

Target Price: _____ Target Customer _____

Additional Information _____

(Coil Type, Fittings, PCFC, Etc.) _____
